

For Patent Information go to <https://goo.gl/2z62aS>

GLXTM 2X PRISM

SCOPE MANUAL

Thank you for choosing this Primary Arms optic.

If you have any questions about your new optic or any of our other products, visit us at www.primaryarmsoptics.com, email us at info@primaryarmsoptics.com, or give us a call at 713-344-9600. The customer service team at our headquarters in Houston, Texas will respond promptly.

If you have any problems with a Primary Arms product, we urge you to contact us immediately and let our customer service professionals handle the situation for you. There is no need to return your scope to the retailer.

*View back cover for lifetime warranty information.

TABLE OF CONTENTS

Page 3	Introducing: Primary Arms (GLx) 2x Compact Prism Scope
Page 4	Achieving a Clear Reticle Picture PLEASE READ THIS FIRST
Page 5	Reticle Illumination
Page 6	Removable Base sand Spacer
Page 6	Improved Mounting System
Page 7	Specifications
Page 8	Features

(A)
Ultra-Bright Reticle features
20,000-hour Battery Life

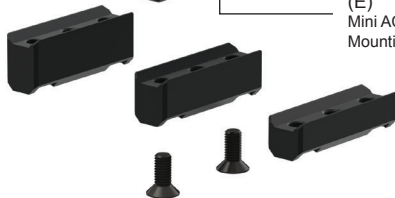
(G)
AutoLive™ Motion-activated
On/Off Illumination

(B)
Threaded Objective for
Anti-Reflective Devices

(F)
Diopter Ring



(E)
Mini ACOG-style
Mounting Interface



(C)
SHIPS WITH 3 ADDITIONAL
RISERS FOR USER-
CONFIGURABLE HEIGHT

(A) 1.64", (B) 1.535", (C) 1.41"

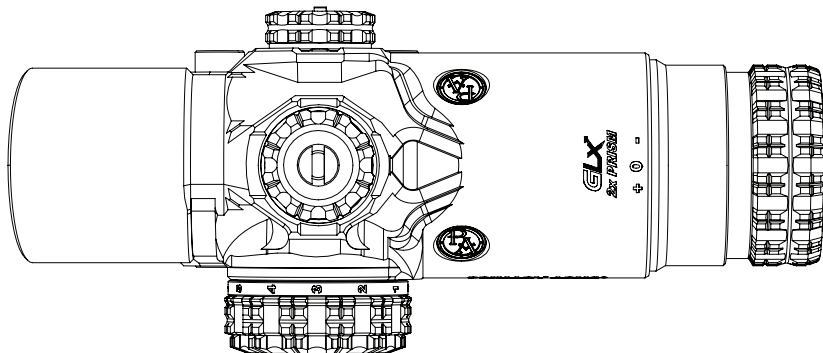
(D)
Rugged Low Base Design with
Hardened Steel Hardware



PRIMARY ARMS GLx 2x COMPACT PRISM SCOPE

This scope utilizes an internal prism design, resulting in a very compact and durable optic. Due to this design, when viewed at certain angles and distances the reticle may appear canted (tilted to the left or right), however the reticle is still representative of where the point of impact will be. Each individual scope has been checked for correct reticle presentation and illumination. When the scope is mounted on a rifle and viewed using the correct eye relief, the reticle will appear in its proper alignment. Our high quality anti-reflection objective lens attachment is also available, part number 210019.

2x COMPACT PRISM SCOPE BODY



HOW TO ACHIEVE A CLEAR RETICLE PICTURE

Setting the adjustable diopter ring (F) at the rear of the eyepiece is a critical first step to successful precision shooting. Looking at a featureless light background like a clear blue sky or blank wall, the reticle should appear sharp and crisp. If it does not, you need to adjust by turning the diopter ring (F). Look at the scope with quick glances and adjust until the reticle is clear at first glance. This is a one-time adjustment. Because everyone's eyes are different, the ideal adjustment will vary from person to person.

The reticle details may appear small when not looking at the ranges they are set for, beyond 300 yards. Shooting at those ranges is best done from a well-supported position.

HOW TO SET RETICLE ILLUMINATION

The illumination knob on the left side of the scope is marked with numbers of increasing brightness from 1 to 11. The knob cap unscrews counter-clockwise, holding a CR2032 battery with the positive(+) side facing towards the cap. Reticle illumination at the lower settings is useful in low light situations like sunrise and sunset. The highest two settings are “daylight bright” settings. Using these settings in low light situations will overpower your eye’s ability to see the target and make the reticle appear distorted. The right amount of illumination creates a clear contrast between the reticle and your intended target, without straining the eye.

This GLx 2x Prism Scope features the AutoLive™ reticle illumination technology (G) which turns your illumination off after three minutes of stillness to save your battery life – then automatically back on again at the slightest motion.

THE REMOVABLE BASE AND SPACER

Thread locker is recommended on the base and accessory rail screws. The 3mm hex base screws may be removed for use with AR-15 carry handle upper receivers in conjunction with our Steel Knurled Head Thumb Screw, part no: 92581A320, and one of the included risers.

The GLx 2x Compact Prism Scope features three removable risers (C) in between the base and the scope body. This product SHIPS WITH 3 ADDITIONAL RISERS FOR USER-CONFIGURABLE HEIGHT

(A) 1.64", (B) 1.535", (C) 1.41"

Use included risers for firearms with straight line stocks such as AR-15s. Removing the riser brings the scope body lower for use with firearms with stocks located lower than the receiver, like AK-47s. The scope body is compatible with mini ACOG® style mounts with or without the riser installed.

IMPROVED MOUNTING SYSTEM

The rugged low based design uses hardened steel M5 torx cross bolts and hardened steel press nut inserts to ensure a tight grip against the rail. Combined with the machined aluminum recoil lugs on the underside of the mount, the scope is prevented from shifting even under the heaviest recoil.

GLx 2x PRISM SPECIFICATIONS

Magnification: 2x	FOV 100yds : 42.0 ft	Illumination Settings: 11 Settings
Eye Relief: 3.5 inches	Adjustment Click Value: 0.25 MOA	Length: 5.3 in
Objective Lens Diameter: 24mm	Total Elevation Adjustment: ≥ 40 MOA	Weight (with battery, without lens covers): 11 oz
Ocular Lens Diameter: 25.5mm	Total Windage Adjustment: ≥ 40 MOA	Warranty: Lifetime Warranty


Specifications may vary and are subject to change without notice.


GLx FEATURES

- AutoLive™ reticle illumination technology turns your illumination off after three minutes of stillness to save your battery life – then automatically back on again at the slightest motion
- 11 brightness settings, including night vision compatibility and daylight bright
- Fully Multi Coated low dispersion glass that offers superior light transmission, clarity, contrast and color from edge to edge
- Designed for comfortable and fast shooting with generous eye relief, a large eye box, and a huge field of view
- Intergrated turret adjustment tab on removable turret caps to adjust windage and elevation
- Fully nitrogen purged, and IP67 waterproof and dust proof
- 6061-T6 main body and components with hardcoat anodization
- Designed and manufactured to handle extreme recoil
- Backed by our lifetime warranty

LENS CARE

Please do not use any organic solvent such as alcohol or acetone on your scope. First, blow dust or any foreign objects off of the lens. Then, use a soft cotton or microfiber lens cloth to clean any fingerprints or smears off the lens. Alternatively, you may use a piece of professional lens paper for further cleaning, if necessary.

 **WARNING:** Always ensure your firearm is unloaded (chamber empty and magazine removed) before installing optics or accessories.

 **WARNING:** Improper installation of firearm parts or accessories may result in death or serious personal injury. If you are not properly trained in the installation of these parts, have them installed by a gunsmith or armorer.

REMEMBER: THE FOUR RULES OF FIREARMS SAFETY

1. Treat every firearm as if it were loaded
2. Never let your muzzle cover anything you are not willing to destroy
3. Keep your finger off the trigger until your sights are on target
4. Be sure of your target and what is behind it



LIFETIME WARRANTY

Your Primary Arms GLx scope is covered by the Primary Arms Lifetime Warranty. If a defect due to materials or workmanship, or even normal wear and tear has caused your product to malfunction, Primary Arms will either repair or replace your product. You can find more details about our lifetime warranty at www.primaryarmsoptics.com.

Email: info@primaryarmsoptics.com
713-344-9600
www.primaryarmsoptics.com

For more information on these optics, go to:
<http://primaryarmsoptics.com/product-category/prism-scopes/glx-prism-scopes/>